

UfM Regional Stakeholder
Conference on
Blue Economy
29-30 November 2017



United Forum for the Mediterranean
Forum pour le Méditerranée
المنتدى من أجل المتوسط

1st UfM Regional Stakeholder
Conference on Blue Economy -
Naples (Italy)
29-30 November 2017



Lebanese Republic

Ministry of Agriculture - MOA

Imad Lahoud

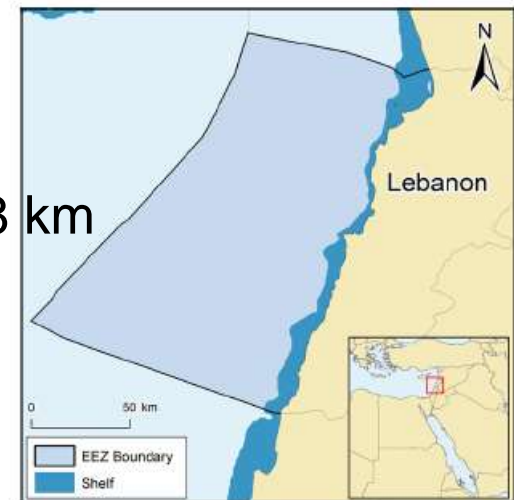
Department of Fisheries and Wildlife DFW



General Country characteristics

Lebanon (GSA 27) at eastern coast of the Mediterranean

- located in Western Asia
- surface area 10,452 square km
- EEZ: declared 2011 (app. 20,000 square km)
- Coastline border 220 km (Mediterranean sea)
- Continental shelf width N-21 km, Beirut <0.5 Km, S-8 km
- Territorial waters: 4 702 km²
- Water depth* Up to 3 000 m



General Country characteristics

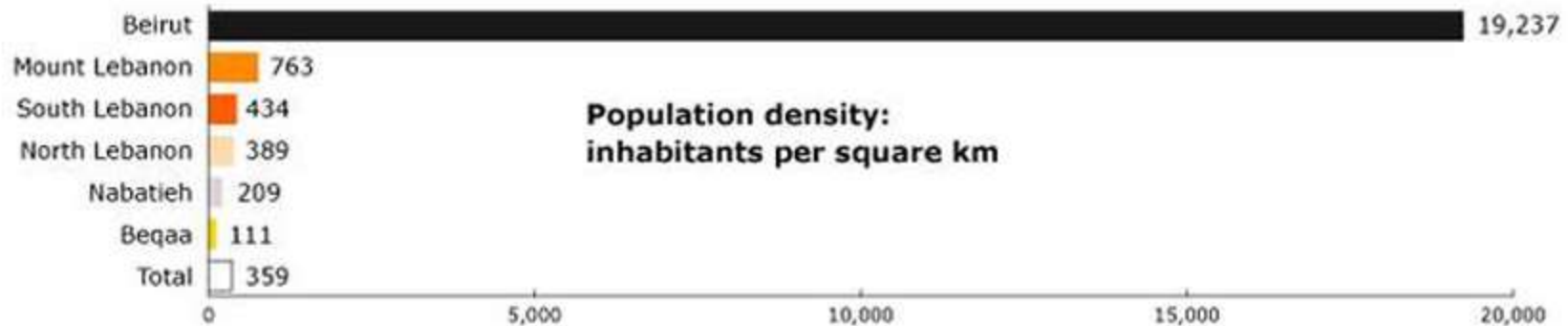
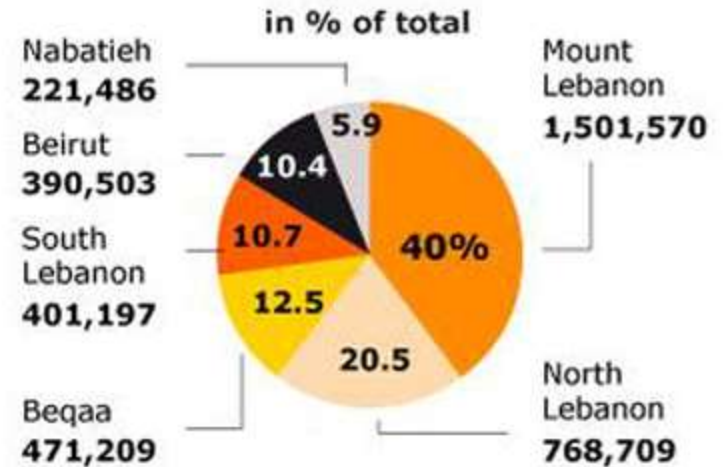
Lebanese coastal zone situation*

- Lebanese coastal zone extends about 220 km
- coastal area covering 162000 hectares of plains and hills (16% country's)
- where 2.6 millions inhabitants live (70% of the Lebanese population)
- Lebanon's economic activities are concentrated in this zone which contributes about three quarters of national income.
- Urban areas stretch over 50 km of the coastline (21%)
- Beaches and dunes cover a total length of about 49 km (20%)
- Bare rocky outcrops about 11km (4.7%)
- Fruit trees on wet soil (primarily citrus groves) border the coastline over 34 km
- Large industrial or commercial units occupy about 24 km (10%)
- Tourism resorts about 18 km (7.5%)
- Ports about 13 km (5.3%)

*Quoting: Tony Assaf, Ministry of Public Works & Transport, Directorate General of Land & Maritime Transport, Marseille, June 2009

General Country characteristics

Lebanon's governorates and their population



Source: Administration Centrale de la Statistique: www.cas.gov.lb, www.localiban.org (Centre de ressources sur le développement local)

General Country characteristics

City	Region	Population	coastal Population
Beirut	Beirut Governorate	2,200,000	2,200,000
Tripoli	North Governorate	850,000	850,000
Jounieh	Mount Lebanon	430,000	430,000
Sidon	South Governorate	229,000	229,000
Zahle	Beqaa Governorate	200,000	
Tyre	South Governorate	135,000	135,000
Baalbek	Baalbek-Hermel Governorate	105,000	
Aley	Mount Lebanon	100,000	
Byblos	Mount Lebanon	100,000	100,000
Nabatieh	South Governorate	85,000	
Zgharta	North Governorate	55,000	55,000
Batroun	North Governorate	45,000	45,000
		4,534,000	4,044,000
			0.89

Ministries involved with coastal zone management

A- Ministry of Public Works & Transport – Directorate General of Land & Maritime Transport (DGLMT)

B- Ministries of:

- Agriculture, department of fisheries and wildlife DFW
- Environment
- Interior affairs and municipalities-coast guards ...
- National defense (army-marine forces) M&C role
- Power and water (petrol)

C- Council of Development and Reconstruction (CDR) established through Decree No. 5 dated 31st January 1977 . The responsibilities of the CDR were specified to three main tasks: complying a plan and a time schedule for the resumption of reconstruction and of development, guaranteeing the funding of projects ...

CDR

- CDR ongoing projects and contracts are distributed over the following four main sectoral groups:
 - Physical infrastructure
 - Social infrastructure
 - Basic services
 - Productive and other sectors

Coastal zone management

Concerns and threats

Security threats: e.g: 2006 assaults on Lebanon, Syrian crisis,

Fisheries direct concern: resource sustainability, livelihood invasive species, activities limitation, fleet characteristics, Social security,...

Managerial: Urban development, pollution, natural resources overexploitation, reliable studies...

Ministry of Environment - MOE

Proposed MPA network

Proposed Marine Protected Area sites:

1. Nakoura Site
2. Sidon rocks Site
3. Raoucheh cliffs and caves Site
4. Beirut Port outer platform Site
5. Byblos Site
6. Medfoun rocky area Site
7. Batroun Phoenician wall Site
8. Ras Chekaa cliffs Site
9. Enfeh Peninsula

Proposed MPA network:

2. Proposed MPA Estuary sites:

- 10: Litani Estuary Site
- 11: Awally estuary Site
- 12: Damour estuary Site
- 13: Nahr Ibrahim estuary Site
- 14: Areeda estuary

Ministry of Agriculture - MOA

Ports, Landing Sites & Marine Fishing Fleet

- Continental shelf: narrow except in north
- Fishing grounds: rocky patches good for stationary demersal gear
- Fishing depths: mostly at depths of up to 50 m
- Fishing concentration: <3nmi from coast

Landings: 3,500 t ?
PS ~1000 t ? small pelagic
Imports: \approx 22,000 t fresh & frozen

- **Ports and landing sites:** 44
Status: 30 Official
- Small scale fishery 100% (98%<12m, 33%<6m, 52%<6-9m)
- Fisheries: Artisanal Fleet average 7m LoA
- Wooden vessels : >85%
- Fleet: app. 2762 licensed fishing boats
- **Primary Fishing Gear:** 53%
Trammel nets (gill nets, pots, longlines, purse seines... (~100 metiers approx. PS).
- **Fishing zone:** < 2nmi from coastline
< 3nmi radius from homeport
- Skippers average age 48 yrs old

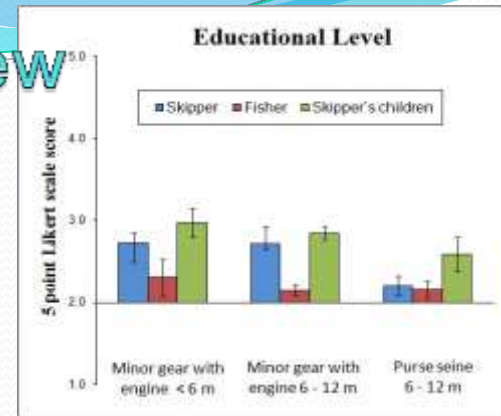
Lebanon Fisheries Sector Overview

Socio-economic context

Lebanese fishing vessels owners/skippers was 48 years (range 18 – 85 years) in 2012

The young fishermen (< 25 years) comprised only 4.7 % of fishermen

15% of fishermen had secondary and university level of education.



FISHERY	Minor gear < 6 m	Minor gear 6 - 12 m	Purse Seine 6 - 12 m
BENEFITS			
Revenue (value of landings)	\$\$ 4.6 million	\$\$\$\$\$\$ 15.1 million	\$\$ 2.6 million
Number of boats employed	533	1,032	204
Annual catch for human consumption	528 tons	2,212 tons	2,112 tons
Subsidy per boat	\$\$ 1,281	\$\$ 1,114	\$ 2,219
Annual fuel oil consumption	441,000 l	2,934,200 l	306,800 l
Catch per tonne of fuel consumed	0.8 t	0.8 t	6.9 t
Catch per Unit of Effort (CUE)	0.8 Kg/Day	19.2 Kg/Day	206.8 Kg/Day

Characteristics	2011
Total population	4.259 millions
Median age	30.4 years
Total labor force (TLF)	1.481 million
GDP per capita (USD)	9 904
Agriculture as % of GDP	6.24 % (0.06% Fisheries)
Official minimum wage per month (USD)	448
Average household size	4.27

	Minor gear with engine < 6 m	Minor gear with engine 6 - 12 m	Purse Seine 6 - 12 m	Total fleet
Ownership %				
Owner engaged in the vessel (%)	94	87	80	88
Fishing as main income generator (%)	82	80	92	81
Skipper – average values				
Age (yr)	49.1	47.7	46.1	47.9
Household size (n)	4.0	4.9	7.1	4.9
Household members engaged in fishing (n)	1.0	1.2	2.1	1.2
Average age of the children (n)	17.9	16.8	16.5	17
Fishers				
Age (yr)	35.1	37.5	33.3	36.8

Fishery General Status

LEBANON is a data deficient country / since – 2004

Effort made by Public sector MOA-DFW since 2004 with International Cooperation (lack of funds, experts and means, regular data collection efforts)

- Fishing Vessels & Facilities Census 2004/5
- Web-based Licensing System
- Pilot catch Assessment (dubbed FLOUCA Web)
- Socio-Economic Studies since 2012 (EastMed)
- EU - ENPI projects (FISHINMed, READYMed Fish)
- New fisheries and aquaculture Law drafted – 2014 (present Law dates back to 1929)
- GFCM- Strategic Roadmap for the Development of Fisheries and Aquaculture
- Value chain analysis – country wide study
- Consumer behaviour.....
- ...

International Cooperation

- FAO
- GFCM
- EastMed
- CIHEAM IAMB -Bari
- EU-ENPICBC
- ...

Fishery General Status – ongoing activities

National activities:

- Catch assessment survey,
- Sardine fisheries landing catch census
- Seafood Value chain analysis study (Ongoing)
- Consumer behaviour study (upcoming)
- Biological data (EastMed-CNRS)
- Surveys at sea (planned 2018-2019) (GFCM)
- Social protection study (in preparation) (GFCM)
- National level Recreational study (in preparation)
-

Other Local activities with International Cooperation

- Governance study (Tyre)
- Recreational pilot assessment study (Tyre)

Sustainable Development of Lebanese Coastal Communities - projects

PROJECT:

NEMO (CIHEAM-BARI)

- Cross-Border Rural Coastal Communities Development, Promoting sustainable development process for coastal rural communities of the Mediterranean countries:
- Mapping of Sustainable Relevant Initiatives of small scale activities in Tiro harbor and coastal system
- Study on “Coastal development program of the Mediterranean region: analysis, strategy and perspectives”.
- WEBPORT, a media facility for the Mediterranean Coastal Communities for supporting the South to South exchange of experience and best practices.

CDR - CIHEAM-BARI

- “Master Plan for Sustainable Development of Lebanese Coastal Communities: Strategic Approaches and Orientation meeting”,

CDR – CIHEAM – MOA, DFW

Based on the essentials rules of sustainability we are structuring with a Holistic approach, the environmental, economic, institutional dimension and social pillars to build our Master Plan for Sustainable Development of Lebanese Coastal Communities...

Project intervention areas include:

Abdeh

El Mina (Tripoli)

Anfeh - Batroun - Byblos

Sarafand

Tyre



CDR – CIHEAM – MOA, DFW

**Importance of marine biodiversity/ ecosystem preservation
infrastructure would not constitute the main emphasis
improved livelihoods of the socio-economically vulnerable people
improving the governance...**

**Road Map. After Selecting areas of intervention
Socio-economic analysis for targeted communities will be initiated
Environmental investigation in the areas...**

Abdeh
El Mina (Tripoli)
Anfeh - Batroun - Byblos
Sarafand
Tyre

