



NEXT GENERATION SMART MARINAS

Dr. Konstantinos Giotopoulos

Head of EU & National Programmes Dep.

Development Company of Chamber of Achaia

projects@e-a.gr

Dr. Ioannis Kostopoulos

SaMMY Co-Founder & CEO

kostopoulos@optionsnet.gr



Accessible



Achaia – Western Greece Adriatic – Ionian Macroregion

Established on 1836 and it is a
Public Law Legal Entity.

Support the private initiative and all forms of
entrepreneurship.

Provide Advisory Services to

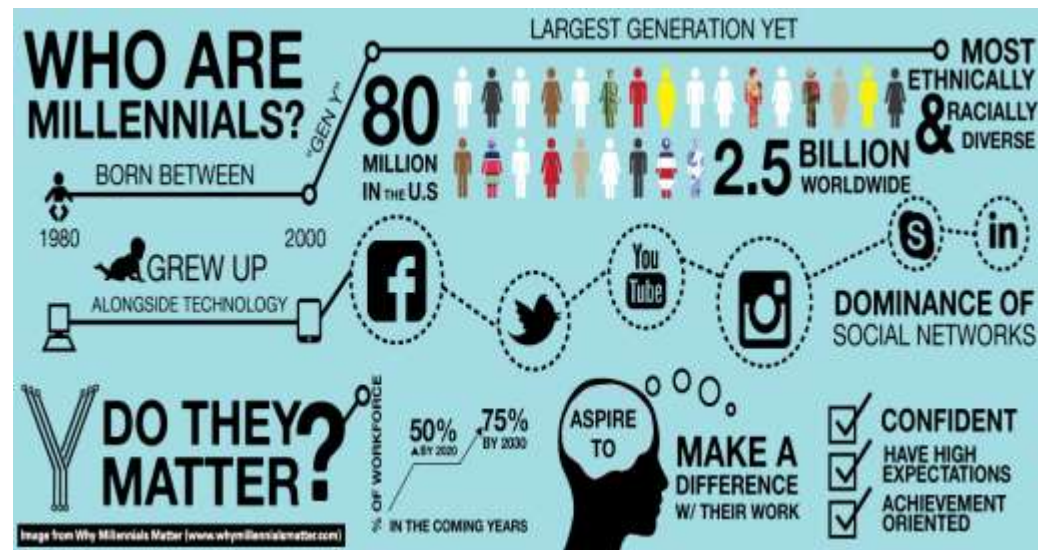
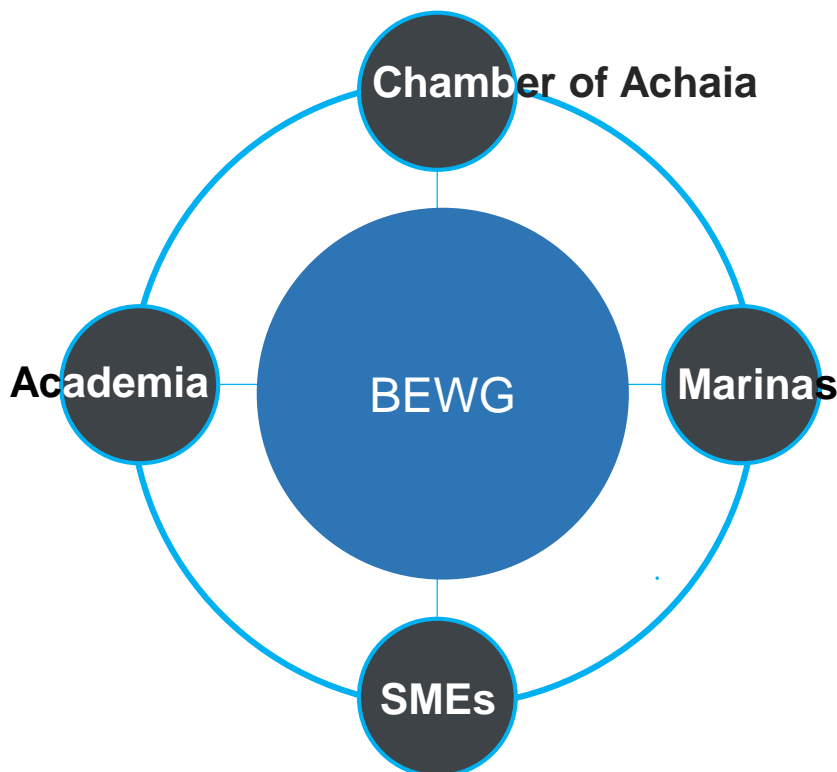
- Government
- Regional Authorities
- Local Authorities
- SMEs



Blue Economy Working Group BEWG

BLUE ECONOMY

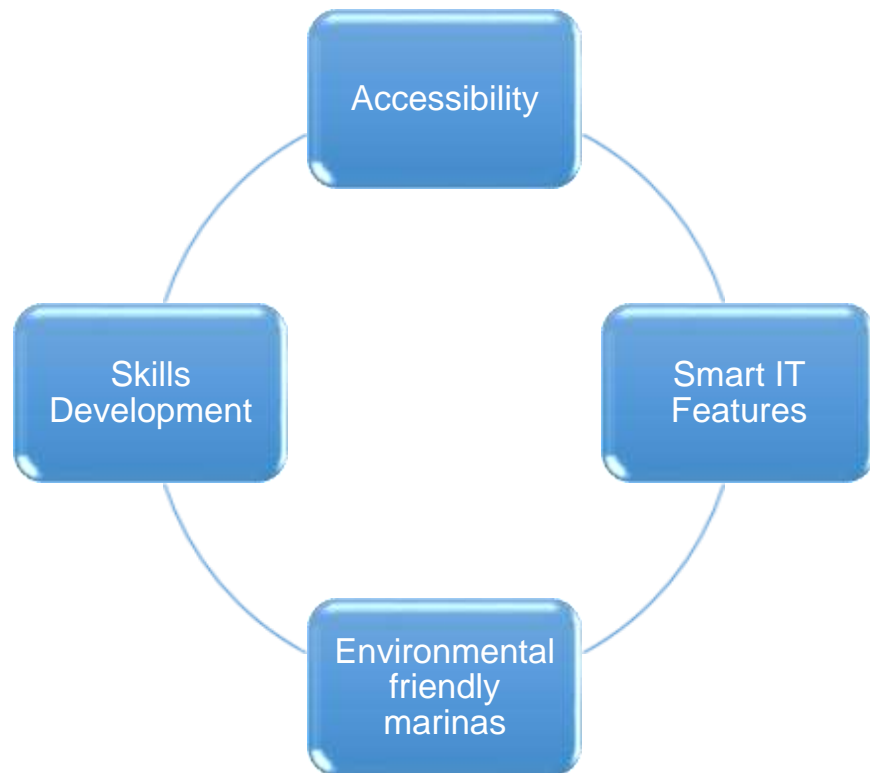
The “blue economy” concept seeks to promote economic growth, social inclusion, and the preservation or improvement of livelihoods while at the same time ensuring environmental sustainability of the sea and coastal areas.



New and emerging technologies
Accessibility
Environmental sustainability

Promotes the concept of integrated next generation coastal tourism

Next Generation Smart Marinas



Aim: Lead transnational Initiatives

Present a pilot case

- Marina Port of Patras
- Municipal marina of Patras

Objectives:

- The design and implementation framework of next generation coastal tourism
- To Debate with international stakeholders
- To Demonstrate a pilot application
- Optimise the proposed model
- Plug and Play Solution of Next Generation Coastal Tourism

Next Generation Smart Marinas

Launch a new technological approach with innovative characteristics

Engage the quadruple-helix actors

Capitalise on EU Awarded Solutions of SMEs:

- SaMMY - Smart Solution for Marinas
- Seatrack (Accessibility issues)
- Pithia (environmental issues)



Introduction



“ Sammyacht.com ”



Yachting Marina: Expectation vs. Reality



Europe

40.8 of the population is living in coastal areas (*Eurostat, 2011*)

70.000 km of coastlines

27.000 km of waterways



Marina ecosystem

4.500 marinas provide 1.75 million berths in inland and coastal areas



Boaters

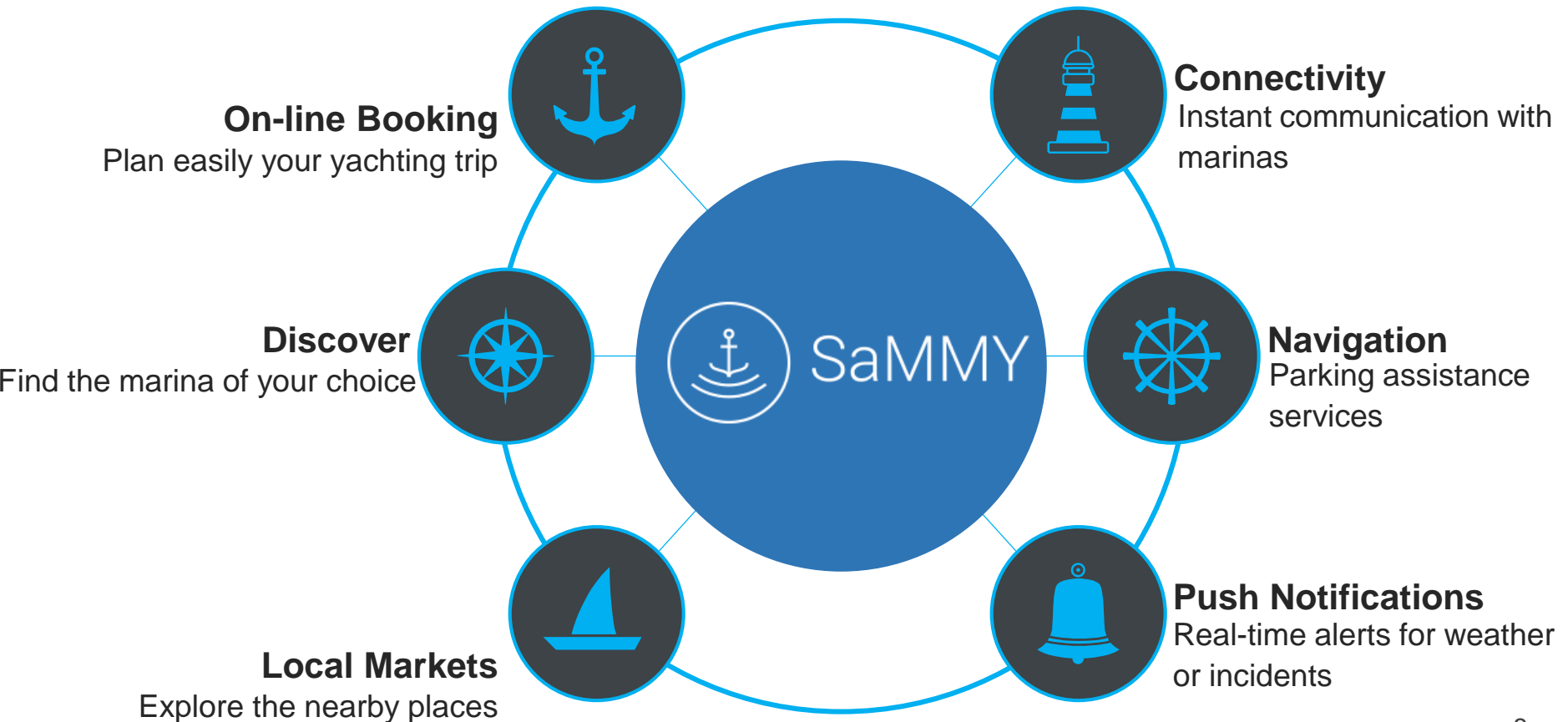
48 million European citizens regularly participate in recreational marine activities

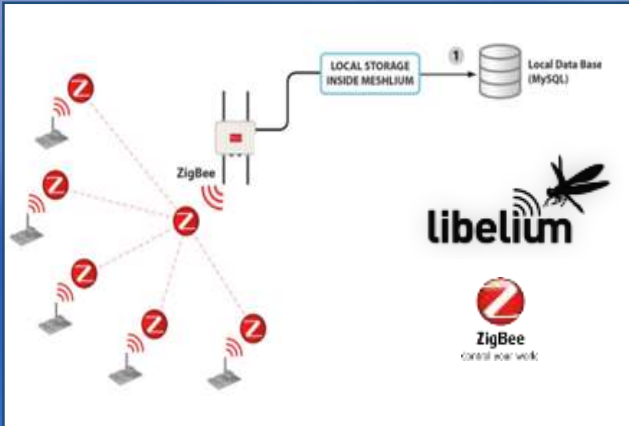


Boats

6 million boats are kept in European waters

Vision: Create a global marketplace, with new intelligent services and tools for the Marinas of the future



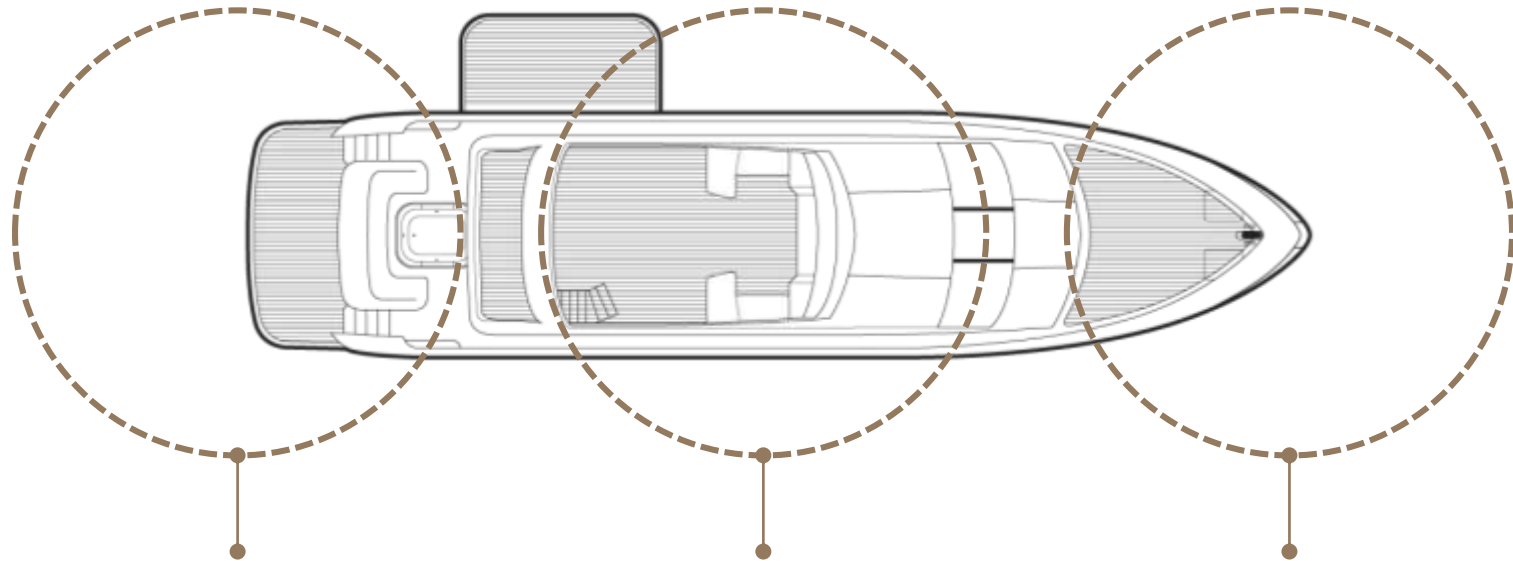


- Gateway Meshlium-PRO-3G-AP
- Plug&Sense, Smart Water
- Plug&Sense Liquid Level Sensors (pH, temp, ORP)
- Plug&Sense Noise Level, Temperature Sensors
- Plug&Sense Ultrasound Sensor
- Solar Panels
- Water Proof: IP67 standard
- Communication protocol: 802.15.4 standard



Multipurpose Sensor Grid

Influence to Yacht Departures and Arrivals, Littering, Sound Detection and Navigation



Ultrasonic Sensors

Check the yacht arrivals and departures and monitor the Berth areas

Water & Sound Sensors

Catch the illegal littering or fuel leakage & sound levels of the yacht engines

Sea Level & Navi

Measure the distance between the sea level and the dock, communicate via GPS or beacons

Dock

Timeline

June 2016



First Customer
Patras Port Authority

August 2016



5 new Marinas & early adopters
Corfu, Lefkas, Kalamata, Zea,
St. Rafael + first booking transactions

June 2017



Networking / Growth
GR Marinas Associations,
Association of GR Yachters
ICOMIA, HISWA

November 2017



18 Marinas on board
Affiliations with key partners
Traction

Team & Projects

- Currently 8 members (business, technical, support)
- EC FP7-FrontierCities Accelerator, EC H2020 Innosup-1-2015 Neptune (Blue Growth), EC H2020 IoT EPI Symbiote, EC H2020 frontierCities2-MAG

Partnerships & Distinctions



incredibleblue

