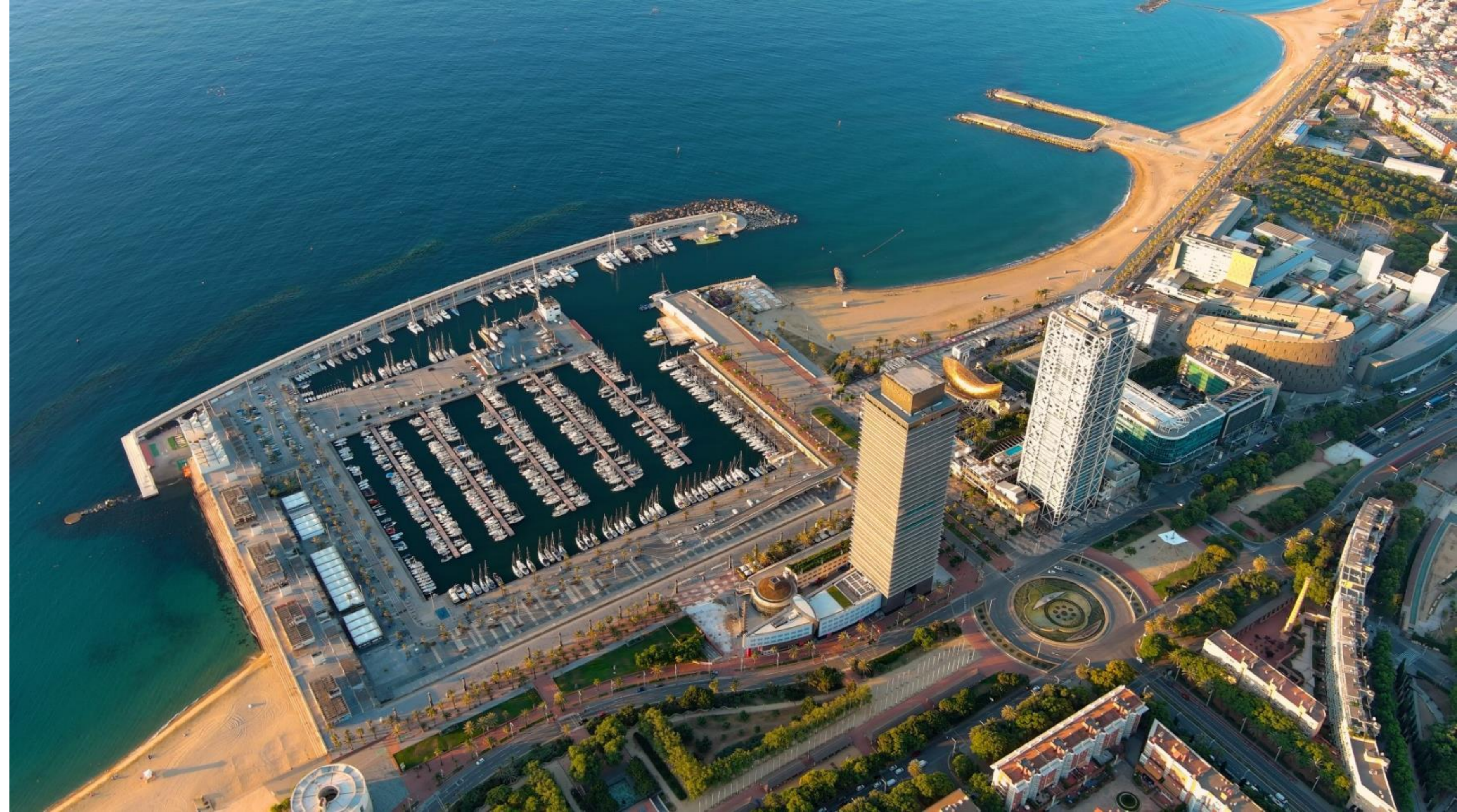




Union for the Mediterranean  
Union pour la Méditerranée  
الاتحاد من أجل المتوسط



17<sup>th</sup> UfM Regional Platform on Sustainable Blue Economy  
Barcelona, UfM Secretariat  
19-20 February, 2025



*Mid-Term Evaluation of the UfM 2021 Ministerial Declaration on Sustainable Blue Economy*  
LDK SED

# Mid-Term Evaluation of the UfM 2021 Ministerial Declaration on Sustainable Blue Economy

Contract title:

**External Mid-term Evaluation of the 2021 UfM Ministerial SB - 35 - PRO547WEB-2024**

Duration:

**Dec 2024 – Aug 2025 (8 months)**

Geographical scope:

**The Mediterranean basin / UfM Member States**

Contractor:

**LDK Socioeconomic Development Consultants**



**LDK SED** is a Knowledge House providing services to the public sector needs analysis, business process re-engineering, strategic planning, capacity building, monitoring and evaluation of development and reform strategies.

# The mid-term evaluation...

- ... was foreseen in the Roadmap, in the context of the preparation of a new Ministerial Declaration, expected possibly after 2025...



- a. It should serve to provide information in support of the preparation and identification of the priorities of a subsequent Ministerial Declaration
- b. Its recommendations may serve as a basis for future political deliberations on the Sustainable Blue Economy

## Policy Cycle

- 01. Design
- 02. Monitoring
- 03. Analysis
- 04. Evaluation



# The mid-term evaluation...



**... is a Formative Evaluation.** It will examine:

- what has been done so far and why, comparing this to the original 2021 Ministerial Declaration and Roadmap provisions
- the extent to which the aims and objectives of the Ministerial Declaration remain feasible, appropriate and acceptable
- any early impact will be recorded, as well as added value which the 2021 Ministerial Declaration can already be found to produce

*Formative evaluations:*

- 1. Occur during policy implementation*
- 2. Allow policy actors to pivot their strategies mid-stream, if necessary*
- 3. Identify areas for improvement*
- 4. Provide opportunities for policy actors to implement feedback*

# Key Evaluation Criteria

(OECD/DAC evaluation criteria)

## RELEVANCE

is the policy doing the right things? Is the policy evaluated addressing ongoing needs?

## IMPACT

What difference does the policy make? What are the long-term, positive or negative, intended or unintended results of the policy?

## COHERENCE

How well does the policy fit? Is it aligned with other strategies and goals of the UfM? Is it aligned with strategies and goals of the environment external to the UfM?

## SUSTAINABILITY

Will the benefits last? How viable are the outputs and outcomes of the Declaration?

## EFFECTIVENESS

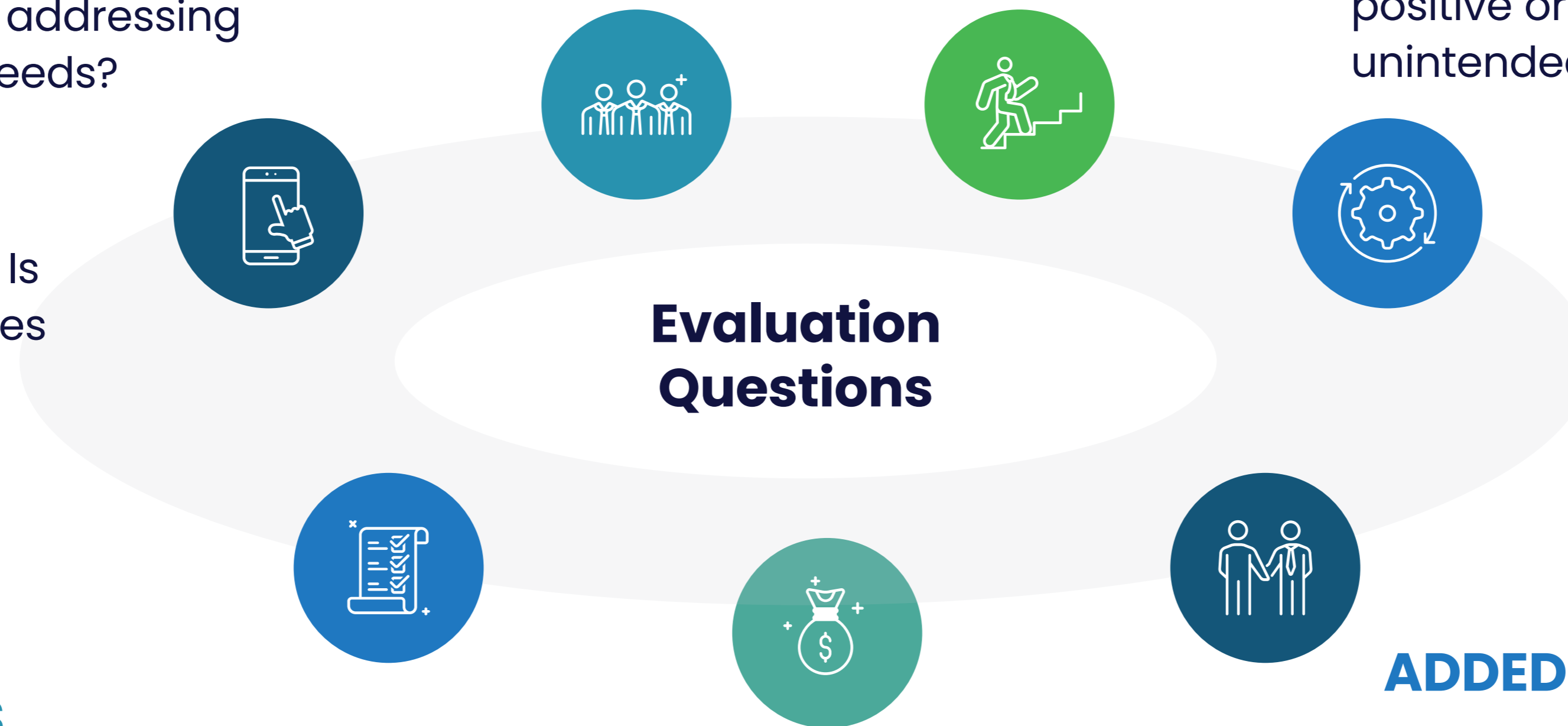
is the policy achieving its objectives? Are results being created?

## EFFICIENCY

How well are resources being used? What are the main challenges in achieving goals so far?

## ADDED VALUE

What added value does the policy bring to the region, in enabling the impact of policies and initiatives in the fields of SBE.



# Bottom-up approach:

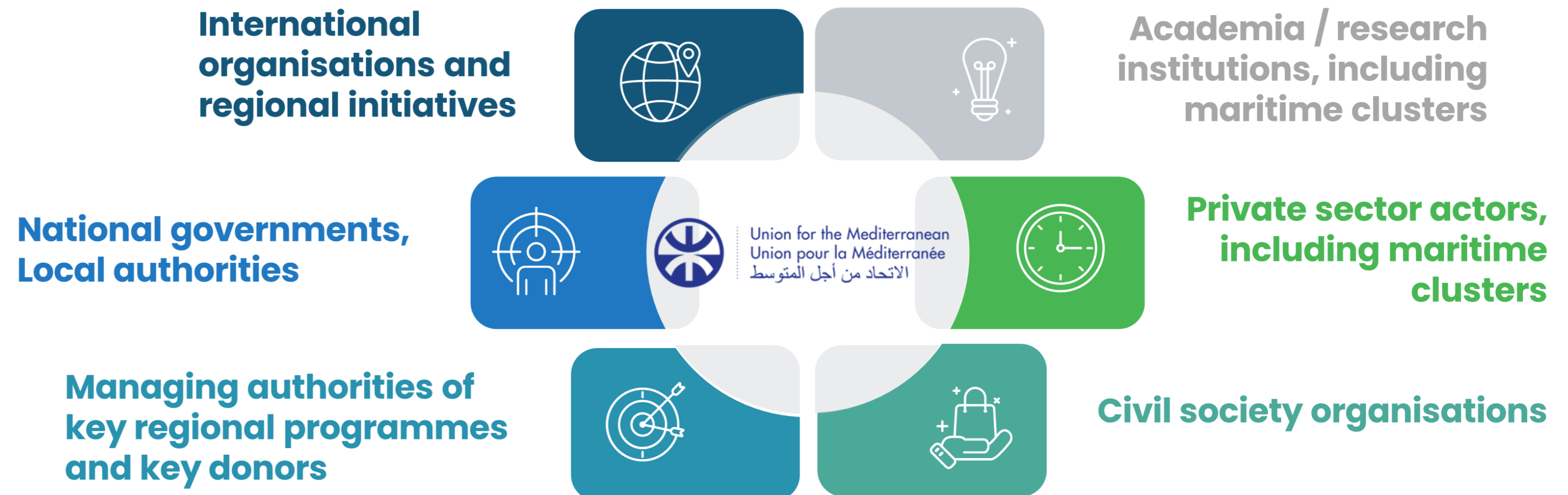


The Evaluator recognizes the level of involvement of institutional and operational partners, which the UfMS has facilitated through its **multi-partner approach**, and which the Ministerial Declaration and the accompanying Roadmap also emphasise



Understanding the importance of **stakeholder engagement and collaboration**, the Evaluator will gather information from all parts of the quadruple helix collaborating in the creation and implementation of regional policy

The Evaluator is keen to gather information about the experiences and views of key national and regional stakeholders



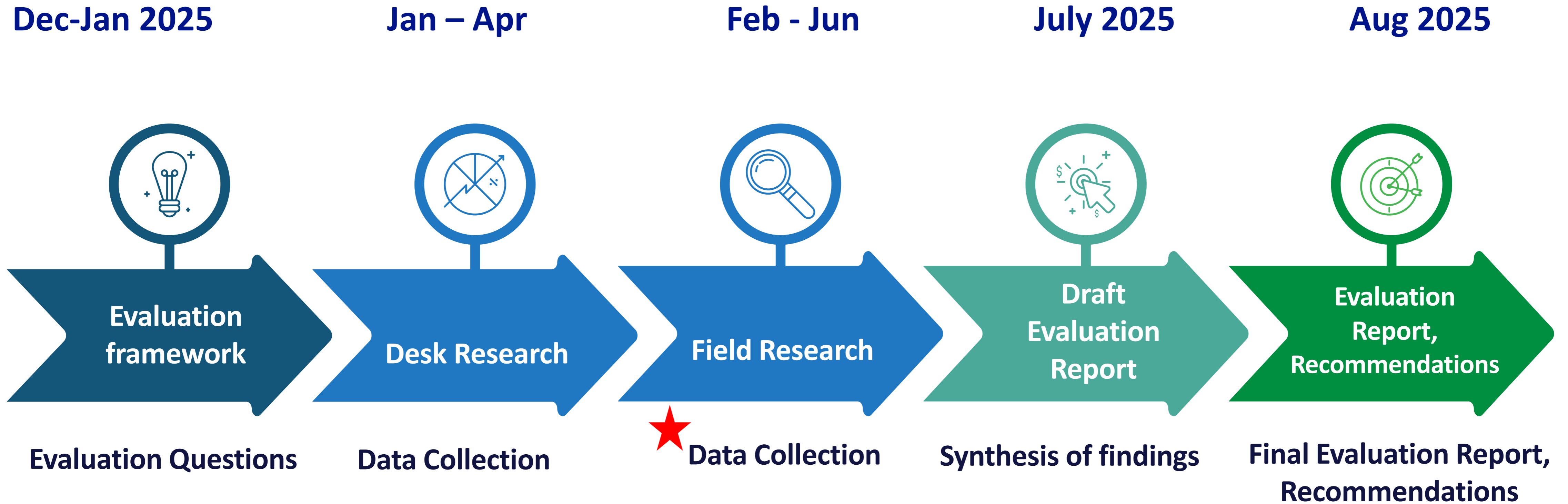
# Evaluation tools

The data gathering for the mid-term evaluation of the 2021 Ministerial Declaration will be carried out with the following tools:

Desk Research (qualitative/quantitative secondary data)	Field Research (qualitative primary data)	Field Research (qualitative primary data)
<ul style="list-style-type: none"><li>● <b>Review of relevant documents</b>, such as policy papers, progress reports, work programmes, meeting reports, timetables, deliverables, etc.</li></ul>	<ul style="list-style-type: none"><li>● <b>Key Informant Interviews</b> with key stakeholders<ul style="list-style-type: none"><li>a. short, in-person interviews</li><li>b. semi-structured interviews online/in-person</li></ul></li></ul>	<ul style="list-style-type: none"><li>● <b>Focus Group Discussions</b> (online)<ul style="list-style-type: none"><li>a. per type of stakeholder</li><li>b. per Sectoral Priority of the 2021 MD</li></ul></li></ul>

GDPR regulations are adhered to in all steps of the evaluation research

# The Evaluation Process



Agreement on evaluation methodology, criteria, and finalization of evaluation questions.

Secondary data collection through desk research and review of relevant documents, progress reports, workplans, etc.  
Logical Framework Analysis

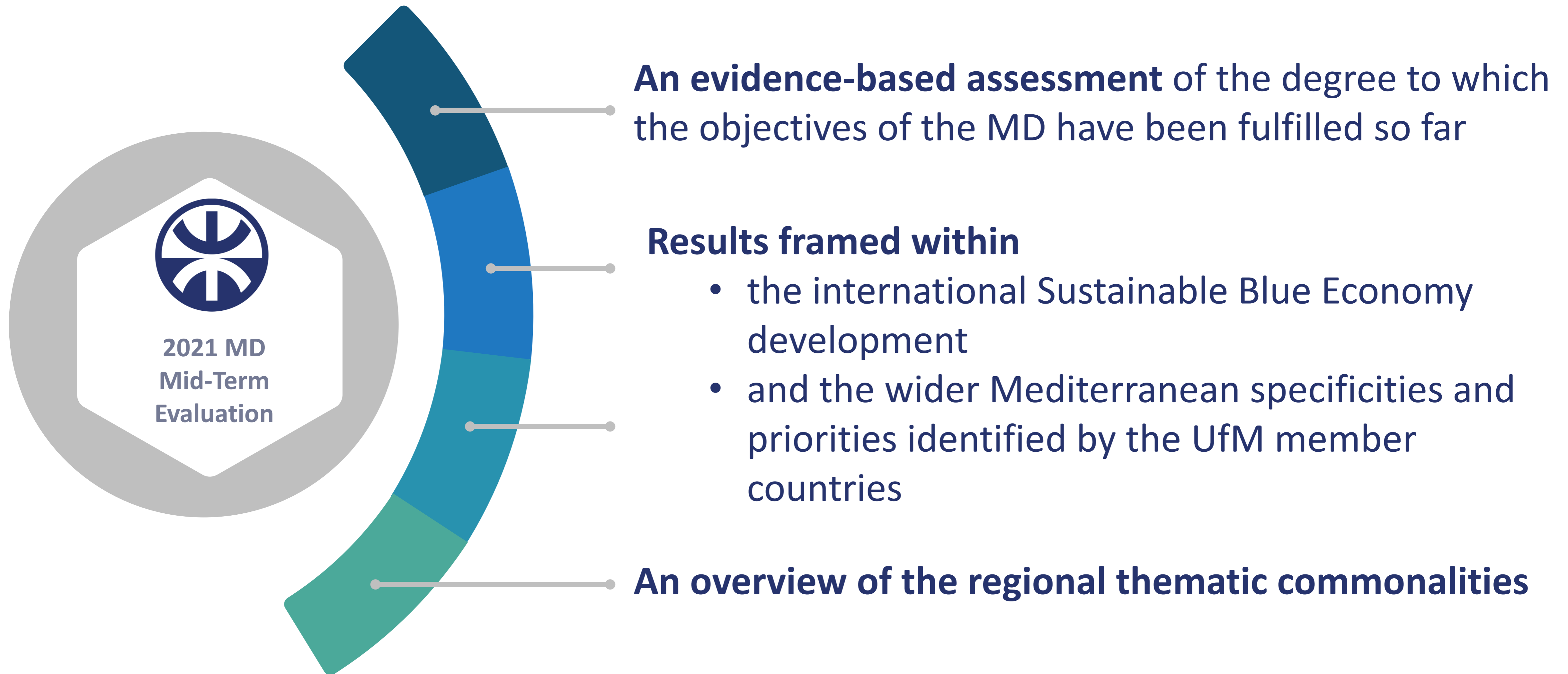
**Primary data collection through Key Informant Interviews with stakeholders and Focus Group Discussions**

Analysis and synthesis of findings, set out per evaluation criterion

Incorporation of comments and finalization of the Evaluation, including conclusions, lessons learnt, and Recommendations



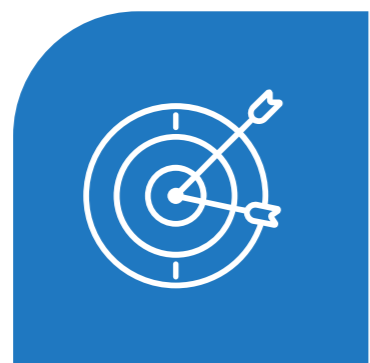
# Expected outcomes of the mid-term evaluation



# The recommendations will enable policy makers to



**Focus, through a forward-looking approach, on new emerging issues or ways/modalities of action**



**Develop a stronger portfolio of SBE initiatives**



**Respond to new necessities emerging from the UfM member countries' recommendations and work programmes**



Union pour la Méditerranée  
Union for the Mediterranean  
الإتحاد من أجل المتوسط

[blueeconomy@ufmsecretariat.org](mailto:blueeconomy@ufmsecretariat.org)

**Join the Mediterranean Blue Economy Stakeholder Platform!**

<https://medblueeconomyplatform.org/>

[www.ufmsecretariat.org](http://www.ufmsecretariat.org)

**Facebook – Twitter – LinkedIn – Instagram**

Secretariat of the Union for the Mediterranean

Pere Duran Farell, 11 - 08034 Barcelona, Spain

# Thank you!

# Merci !

# شكراً

Dr. Tina Orfanidou

main@ldksed.gr

LDK Socioeconomic Development Consultants

