



European Union



Union pour la Méditerranée
Union for the Mediterranean
الإتحاد من أجل المتوسط



The Hashemite
Kingdom of
Jordan

19th meeting of the UfM Regional Platform on SBE
21 April 2026

Barcelona, UfM Secretariat premises
Pere Duran Farell, 11. 08034 Barcelona, Spain

Value chains, infrastructure and services supporting fisheries and coastal economies

MASSIMO ZUCCARO, CIHEAM Bari

Mediterranean Sea



A basin under pressure

The Mediterranean is a strategic region for food security, livelihoods and regional stability, yet increasingly exposed to multiple and interconnected threats.

⚠️ Key Challenges



Climate change

- Rising temperatures, marine heatwaves
- Acidification & deoxygenation
- “Tropicalization” of ecosystems



Biodiversity & invasive species

- Decline of native species
- Spread of invasive species (e.g. blue crab, pufferfish)



Overexploitation

- Pressure on fish stocks
- Unsustainable fishing practices



Pollution & degradation

- Marine litter & plastics
- Coastal urbanization
- Wastewater discharge



Governance gaps

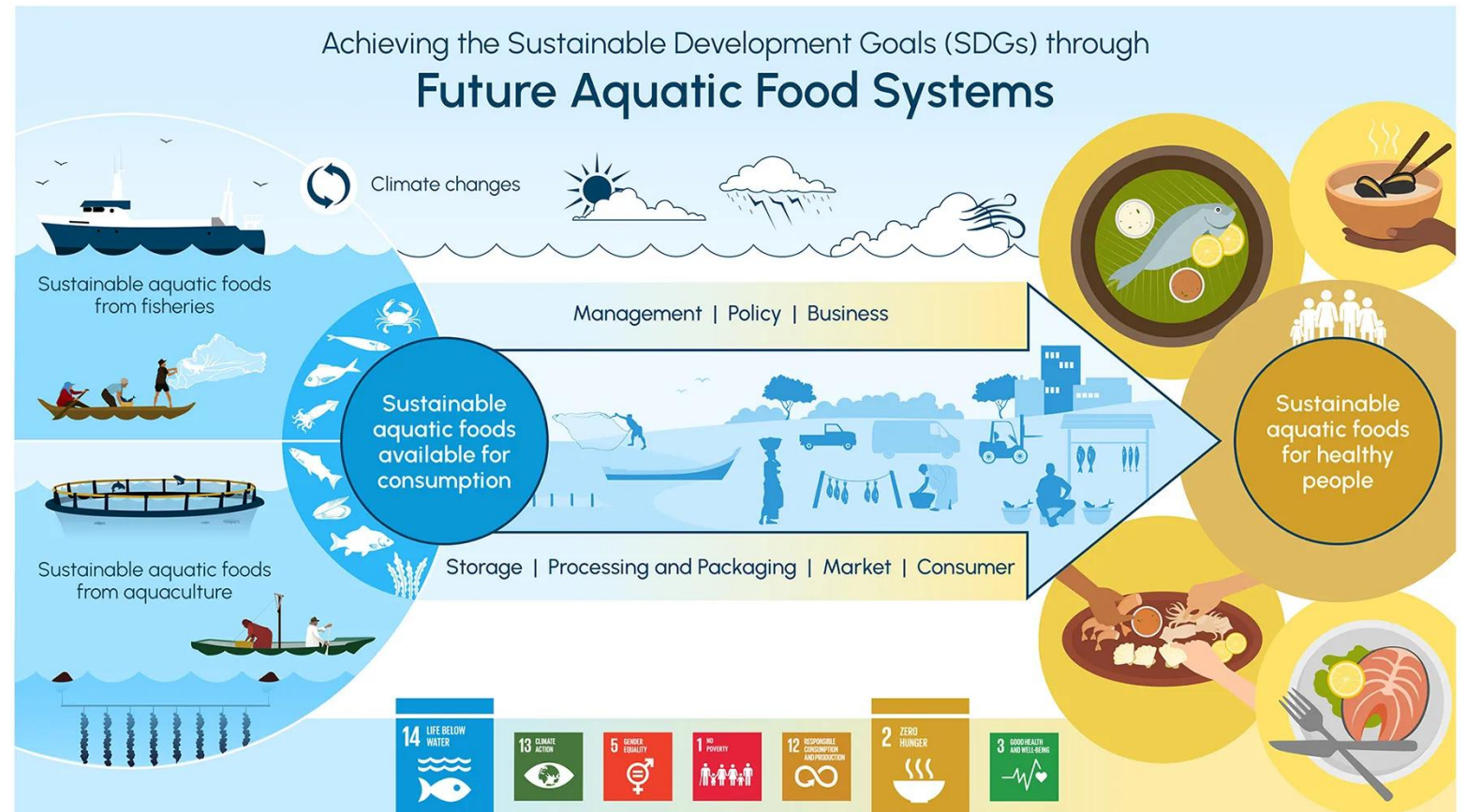
- Fragmented policies
- Weak regional coordination



Socio-economic vulnerability

- Fragile coastal communities
- Limited diversification & income instability

We are not only facing an environmental crisis, but a transformation of the entire food system from the sea — requiring us to rethink how we produce, manage and valorise marine resources.



Hasselberg AE, et al. (2024). Future aquatic food systems, highlighting the pathway from production to consumption where at all steps targeted management and strategic decisions will allow the system to most successfully and equitably contribute to the seven SDGs shown at the bottom related to poverty (1), hunger (2), health (3), gender equality (5), responsible consumption (12), climate action (13), and life below water (14).

Collapse of traditional fisheries

Proliferation of low-value or harmful species

Shift in species distribution

Declining fish stocks

Reduced stock availability

Increased variability and uncertainty of catches

Reduced long-term yields



To diversify the fisheries sector by exploring the ecological and economic potential of Alien Species and Native Invaders, enhancing resilience and promoting sustainable consumption models.

ALIEN SPECIES are animals, plants or other organisms that are introduced by humans, either intentionally or accidentally, into places outside of their natural range, negatively impacting native biodiversity, ecosystem services or human economy and well-being.



NATIVE INVADERS can exhibit invasive behaviour within their own range, rapidly increasing in abundance and expanding distribution due to human-induced environmental changes. These “native invaders” (Simberloff, 2011) can trigger population outbreaks with impacts comparable to those of non-native bioinvasions (Blackburn et al., 2019).

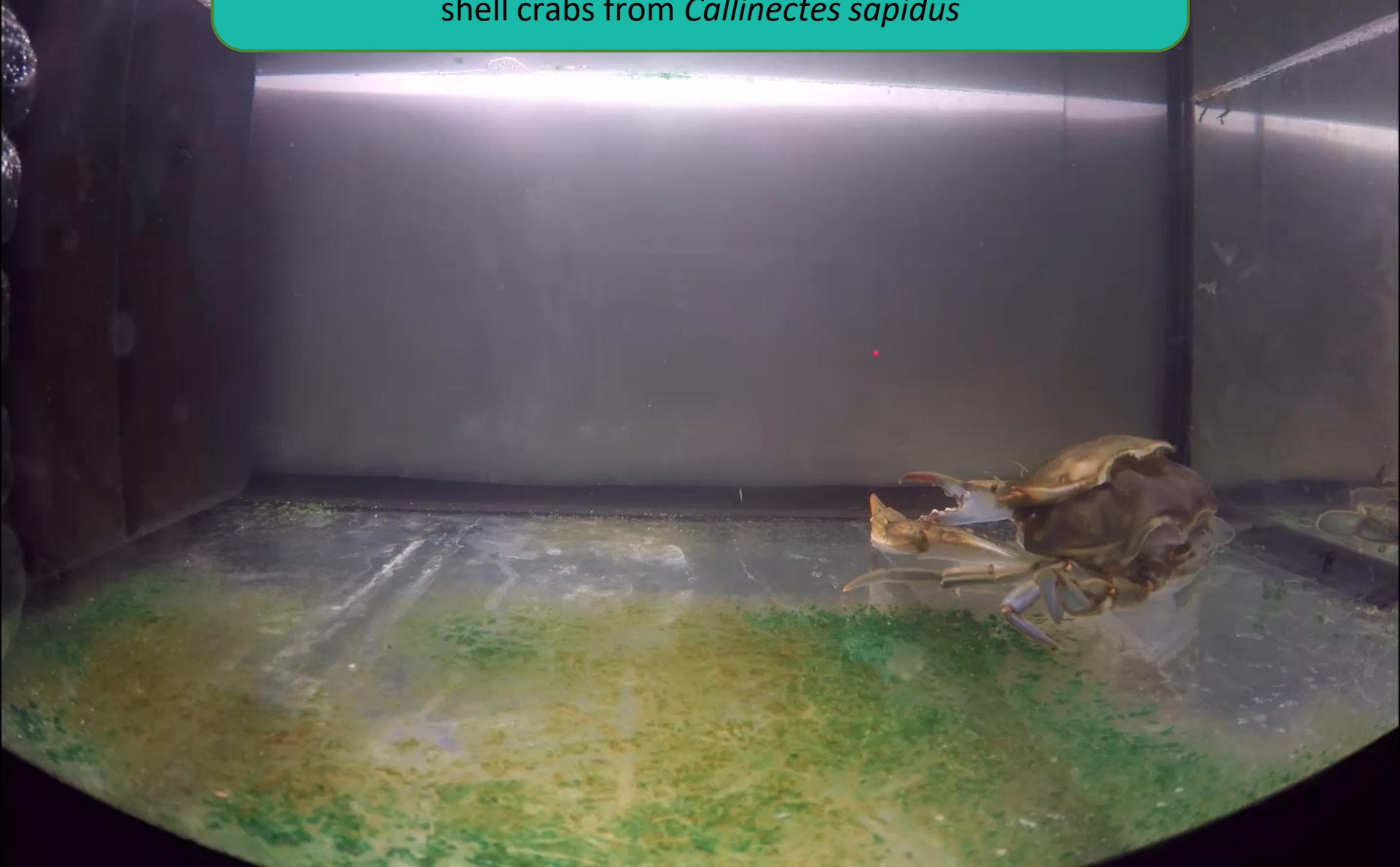
List of Native invaders for Med Sea

- Bluefish (*Pomatomus saltatrix*)
- Dolphinfish (*Coryphaena hippurus*)
- Barracuda (*Sphyraena barracuda*)
- Little tunny (*Euthynnus alletteratus*)
- Caranx sp.
- Parrotfish (*Sparisoma cretense*)
- Sarpa salpa
- Coris julis
- Epinephelus marginatus
- Serranus cabrilla
- Serranus scriba
- Thalassoma pavo



Diversification and added value

Added value in the food market through the production of soft-shell crabs from *Callinectes sapidus*



CRABOOST



HIGHER MEAT YIELD

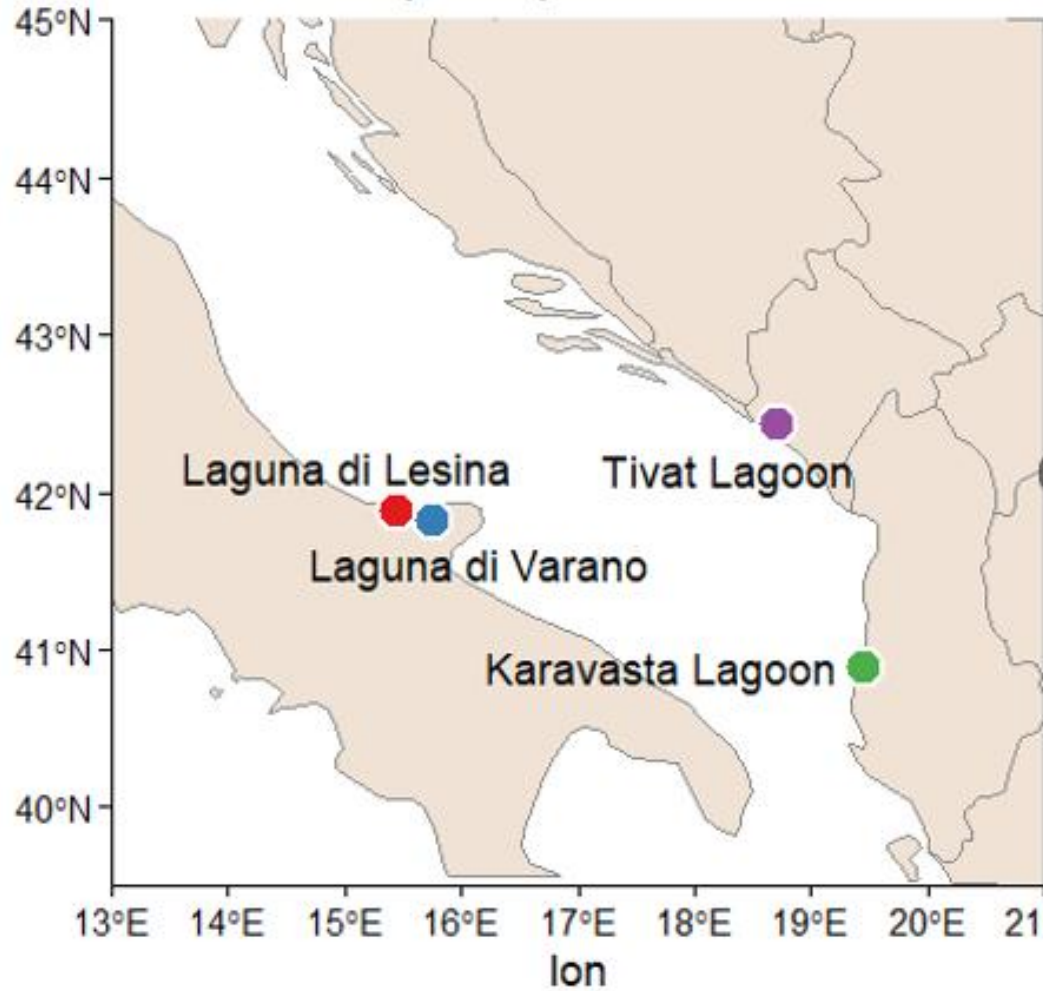
In soft-shell crabs, **meat accounts for approximately 90%**, compared to 10–15% in hard-shell crabs.

HARD SHELL CRAB - AVERAGE
PRODUCER PRICE: 1,50 – 2,00 €/kg

HARD SHELL CRAB - AVERAGE SELLING
PRICE: 8 – 15 €/kg

SOFT SHELL CRAB prices generally range **from € 40 to over € 200** per dozen, depending heavily on the size and whether they are fresh or frozen.

CRABoost



ADRIATIC PILOT AREAS

Enhance the diversification of fisheries production in the pilot areas by creating new income opportunities through soft-shell crab production and the training of fishermen

The main objectives are:

- To test fishing gears targeting *Callinectes sapidus*
- To test and optimise floating cage techniques for soft-shell crab production
- To validate the reliability of visual pre-molt indicators
- To evaluate molting success rates and post-molt survival rates



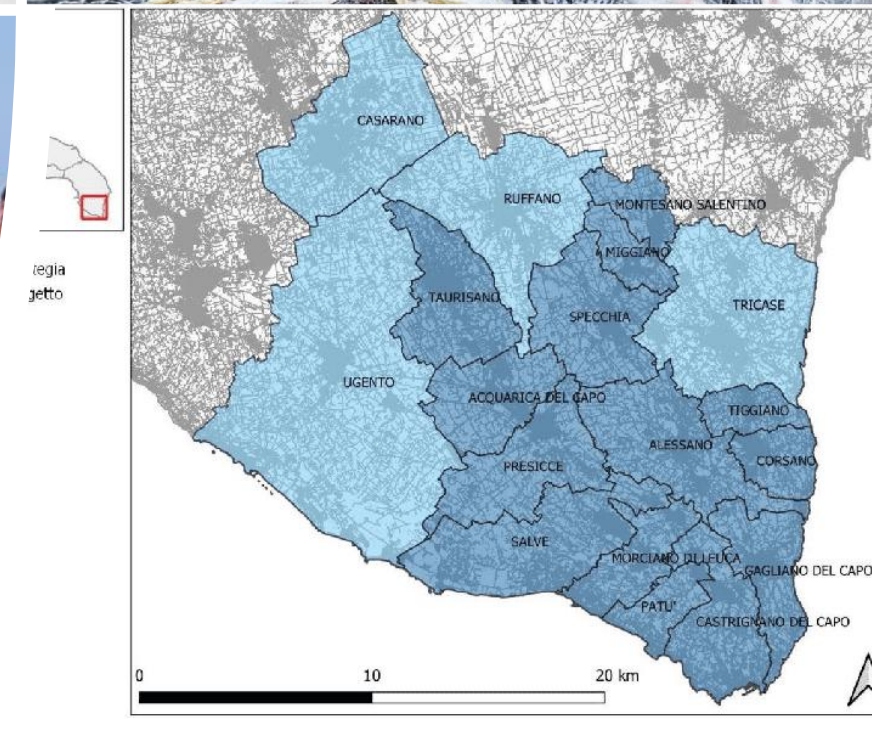


Who are the direct beneficiaries of FOOD4HEALTH Community Lab services?

- MSMEs
- Farmers
- Small-scale fisheries
- Agrotourism
- Local consumers
- Agribusiness startups
- School canteens
- Hospital catering

Area of impact

- 18 municipalities
- 130,000 inhabitants
- 471 square kilometers



Interreg - IPA CBC

Italy - Albania - Montenegro



EUROPEAN UNION

FOOD4HEALTH